



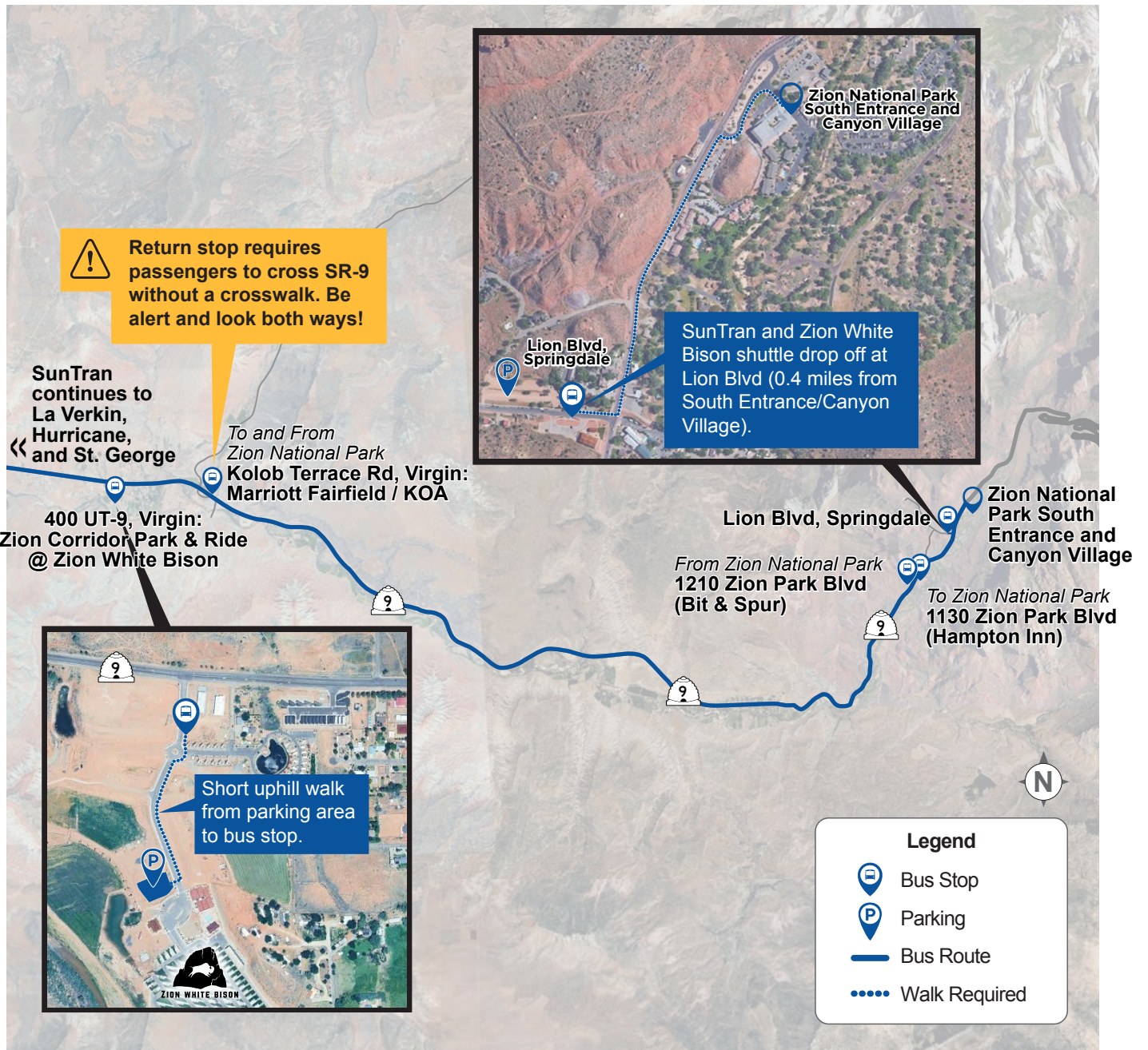
# Zion Corridor Park & Ride: Route Information



**Free parking**, including space for large vehicles, for anyone traveling to Zion National Park. Parking is available on a first come, first served basis at Zion White Bison Resort.



SunTran buses or the Zion White Bison shuttle provide service from the roundabout to Lion Boulevard in Springdale, a short walk to the Zion National Park South Entrance.





# SunTran and Zion White Bison: Combined Schedule

Monday through Saturday																
St. George to Springdale																
Stops	ST	ZWB	ST	ST	ZWB	ST	ST	ST	ST	ST	ZWB	ST	ST	ST	ST	
To Zion National Park	AM								PM							
Address, City: Landmark																
1670 S 120 E, St. George: <i>Dixie Center</i>	5:40 a		7:00 a	8:00 a		10:00 a	11:00 a	12:00 p	1:00 p	2:00 p		4:00 p	5:00 p	6:00 p	7:30 p	
Red Cliffs Mall, St. George: <i>Barnes &amp; Noble</i>	5:49 a		7:09 a	8:09 a		10:09 a	11:09 a	12:09 p	1:09 p	2:09 p		4:09 p	5:09 p	6:09 p	7:39 p	
Buena Vista, Washington: <i>Boiler Park</i>	5:58 a		7:18 a	8:18 a		10:18 a	11:18 a	12:18 p	1:18 p	2:18 p		4:18 p	5:18 p	6:18 p	7:48 p	
5300 W Regional Park Rd, Hurricane: <i>DMV</i>	6:09 a		7:29 a	8:30 a		10:29 a	11:29 a	12:29 p	1:29 p	2:29 p		4:29 p	5:29 p	6:29 p	7:59 p	
3400 W, Hurricane: <i>Walmart</i>	6:15 a		7:35 a	8:38 a		10:35 a	11:35 a	12:35 p	1:35 p	2:35 p		4:35 p	5:35 p	6:35 p	8:05 p	
700 W State St, Hurricane	6:24 a		7:44 a	8:46 a		10:44 a	11:44 a	12:44 p	1:44 p	2:44 p		4:44 p	5:44 p	6:44 p	8:14 p	
300 N State St, La Verkin	6:30 a		7:50 a	8:53 a		10:50 a	11:50 a	12:50 p	1:50 p	2:50 p		4:50 p	5:50 p	6:50 p	8:20 p	
400 SR-9, Virgin: <i>Zion Corridor Park &amp; Ride @ Zion White Bison</i>	6:39 a	7:30 a	7:59 a	9:03 a	10:03 a	10:59 a	11:59 a	12:59 p	1:59 p	2:59 p	4:03 p	4:59 p	5:59 p	6:59 p	8:29 p	
Kolob Terrace Rd, Virgin: <i>Marriott Fairfield / KOA</i>	6:41 a	7:35 a	8:01 a	9:08 a	10:08 a	11:01 a	12:01 p	1:01 p	2:01 p	3:01 p	4:08 p	5:01 p	6:01 p	7:01 p	8:31 p	
1130 Zion Park Blvd, Springdale: <i>Hampton</i>	6:57 a	7:47 a	8:17 a	9:17 a	10:20 a	11:17 a	12:17 p	1:17 p	2:17 p	3:17 p	4:20 p	5:17 p	6:17 p	7:17 p	8:47 p	
Lion Blvd, Springdale (Arrive)	7:02 a	7:51 a	8:22 a	9:22 a	10:24 a	11:22 a	12:22 p	1:22 p	2:22 p	3:22 p	4:24 p	5:22 p	6:22 p	7:22 p	8:52 p	
Stops	Springdale to St. George															
From Zion National Park	ST	ZWB	ST	ST	ZWB	ST	ST	ST	ST	ST	ZWB	ST	ST	ST	ST	
Lion Blvd Springdale: (Depart)	7:20 a	8:05 a	8:40 a	9:40 a	10:40 a	11:40 a	12:40 p	1:40 p	2:40 p	3:40 p	4:40 p	5:40 p	6:40 p	7:40 p	9:10 p	
1210 Zion Park Blvd, Springdale: <i>Bit &amp; Spur</i>	7:23 a	8:09 a	8:43 a	9:43 a	10:44 a	11:43 a	12:43 p	1:43 p	2:43 p	3:43 p	4:44 p	5:43 p	6:43 p	7:43 p	9:13 p	
Kolob Terrace Rd, Virgin: <i>Marriott Fairfield / KOA</i>	7:37 a	8:21 a	8:57 a	9:57 a	10:56 a	11:57 a	12:57 p	1:57 p	2:57 p	3:57 p	4:56 p	5:57 p	6:57 p	7:57 p	9:27 p	
400 SR-9, Virgin: <i>Zion Corridor Park &amp; Ride @ Zion White Bison</i>	7:40 a	8:26 a	9:00 a	10:00 a	11:01 a	12:00 p	1:00 p	2:00 p	3:00 p	4:00 p	5:01 p	6:00 p	7:00 p	8:00 p	9:30 p	
300 N State St, La Verkin	7:51 a		9:11 a	10:11 a		12:11 p	1:11 p	2:11 p	3:11 p	4:11 p		6:11 p	7:11 p	8:11 p	9:41 p	
700 W State St, Hurricane	7:57 a		9:17 a	10:17 a		12:17 p	1:17 p	2:17 p	3:17 p	4:17 p		6:17 p	7:17 p	8:17 p	9:47 p	
3400 W, Hurricane: <i>Walmart</i>	8:03 a		9:23 a	10:23 a		12:23 p	1:23 p	2:23 p	3:23 p	4:23 p		6:23 p	7:23 p	8:23 p	9:53 p	
5300 W Regional Park Rd, Hurricane: <i>DMV</i>	8:11 a		9:31 a	10:31 a		12:31 p	1:31 p	2:31 p	3:31 p	4:31 p		6:31 p	7:31 p	8:31 p	10:01 p	
Buena Vista, Washington: <i>Boiler Park</i>	8:20 a		9:40 a	10:40 a		12:40 p	1:40 p	2:40 p	3:40 p	4:40 p		6:40 p	7:40 p	8:40 p	10:10 p	
Red Cliffs Mall, St. George: <i>Barnes &amp; Noble</i>	8:29 a		9:49 a	10:49 a		12:49 p	1:49 p	2:49 p	3:49 p	4:49 p		6:49 p	7:49 p	8:49 p	10:19 p	
1670 S 120 E, St. George: <i>Dixie Center</i>	8:39 a		9:59 a	10:59 a		12:59 p	1:59 p	2:59 p	3:59 p	4:59 p		6:59 p	7:59 p	8:59 p	10:29 p	

Sunday				
Virgin to Springdale				
Stops	ZWB	ZWB	ZWB	ZWB
To Zion National Park	AM		PM	
Address, City: Landmark				
400 SR-9, Virgin: <i>Zion Corridor Park &amp; Ride @ Zion White Bison</i>	7:30 a	10:00 a	1:30 p	4:00 p
Kolob Terrace Rd, Virgin: <i>Marriott Fairfield / KOA</i>	7:35 a	10:05 a	1:35 p	4:05 p
1130 Zion Park Blvd, Springdale: <i>Hampton</i>	7:50 a	10:20 a	1:50 p	4:20 p
Lion Blvd, Springdale (Arrive)	7:55 a	10:25 a	1:55 p	4:25 p
Stops	Springdale to Virgin			
From Zion National Park	ZWB	ZWB	ZWB	ZWB
Lion Blvd, Springdale (Depart)	8:20 a	10:50 a	2:20 p	4:50 p
1210 Zion Park Blvd, Springdale: <i>Bit &amp; Spur</i>	8:25 a	10:55 a	2:25 p	4:55 p
Kolob Terrace Rd, Virgin: <i>Marriott Fairfield / KOA</i>	8:40 a	11:10 a	2:40 p	5:10 p
400 SR-9, Virgin: <i>Zion Corridor Park &amp; Ride @ Zion White Bison</i>	8:45 a	11:15 a	2:45 p	5:15 p

## ADDITIONAL INFORMATION

- ➔ ZWB runs from Virgin to Springdale and DOES NOT go to St. George, Washington, Hurricane, or La Verkin.
- ➔ Sunday service is provided by ZWB only.
- ➔ Cost: \$5 one-way (SunTran has a monthly pass, but the monthly pass is NOT accepted by ZWB).
- ➔ BOTH SunTran and ZWB accept cash, credit card, or Venmo.
- ➔ Schedules are approximate. Riders should arrive at least 5 minutes early, as buses may run slightly ahead or behind schedule due to traffic.

Zion White Bison (ZWB)  
 SunTran (ST)